

# exalux CONTROL ONE

## QUICK USER GUIDE

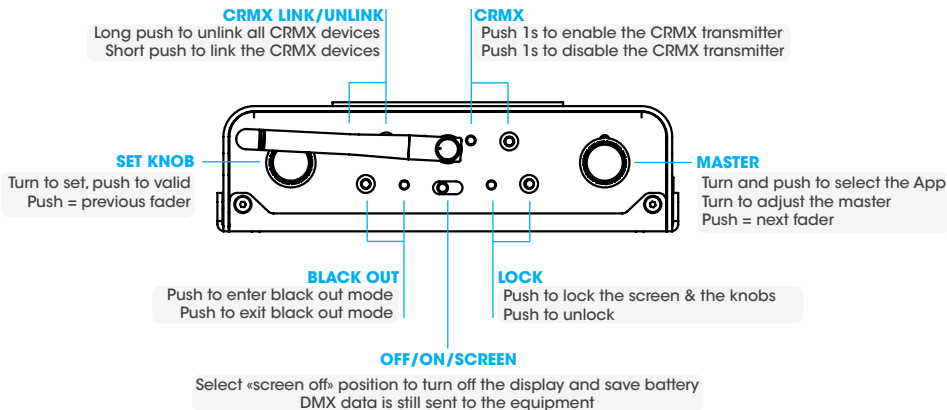
### FEATURES

- ▶ 5-in-1 tools : Fixture controller, DMX Console, CRMX Transmitter, DMX recorder, DMX Player,
- ▶ 1 DMX universe,
- ▶ 8 tact switches to save/reload memories,
- ▶ Black out function, Lock / unlock function,
- ▶ Runs up to 7h with a 10Ah/36Wh PowerBank,
- ▶ Able to control up to 40 various fixtures.

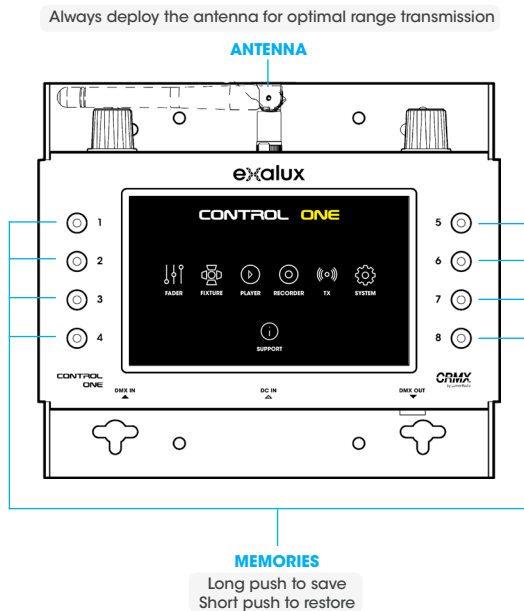
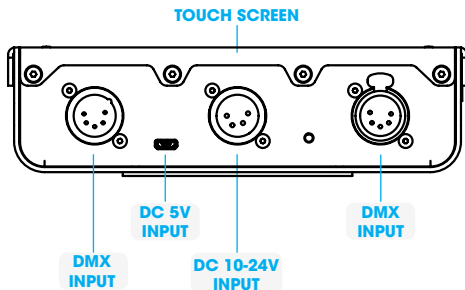
### TECHNICAL SPECIFICATIONS

- ▶ 2,4GHz CRMX by LumenRadio™
- ▶ TFT 5.0" capacitive touch super bright display
- ▶ Link range : up to 1000 meters line-of-sight\*
- ▶ +5VDC (USB) + 10-24VDC (XLR4) Input / ~5W
- ▶ XLR5 DMX input & output
- ▶ 180x154x50 mm | 700g

\* depending on the receiver and the environment



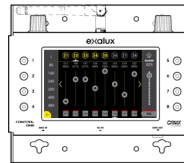
Use your finger or stylus to launch and control applications



# LET'S GO WITH THE APPS !

**FADER APP** works the exact same way than your hardware DMX console you used for years. Every fader is linked to a DMX address.  
512 sliders | 1 master | 8 memories | Black Out, Full On

## FADER



Turn and push to select the App  
or  
Touch to select the App on the screen

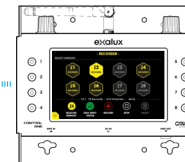
**PLAYER APP** allows you to play the DMX memories that have been recorded with the FADER, DIMMER and RECORDER Apps

## PLAYER



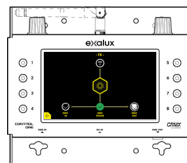
**RECORDER APP** allows to record 512 DMX channels in real time.  
8 memories | 80s recording @44Hz max

## RECORDER



**TX APP** turns the CONTROL SKY into a CRMX transmitter. The DMX data bytes received on the DMX input are wirelessly transmitted by the integrated CRMX transmitter.

## TX



[watch the video !](#)



**exalux**  
contact@exalux.eu

## FIXTURE

**FIXTURE APP** allows to control up to 40 various DMX fixtures. The fixtures are added from a library that can be updated by USB.

